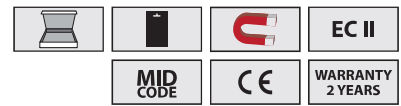


## ★★★★★ BLUE-LINE® Pocket Measuring Tape EC II

- exceptional tape stability
- suitable for craftsmen and industry
- ergonomic design
- lies save and non slip in your hand
- rugged and rubber covered housing with stainless metal clip and lanyard
- yellow coated blade, high rubb-off resistant and kink resistant
- self adjusting end-hook, with magnetic dots
- long-life spring made of special steel, automatic blade return and blade stop
- black/red figures, black scale
- from up to 25 mm blade with 3 rivets fixed



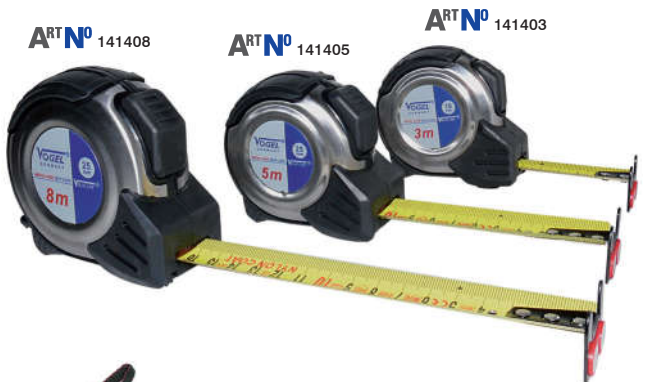
with hanging card



ART N°	order quantity	ART N°	order quantity							
<b>graduation in mm</b>										
141003	1 - 120	141003/121	121 - >	3 m	0.9	16	65x65x35	1400	0.148	
141005	1 - 120	141005/121	121 - >	5 m	1.3	19	65x73x35	1750	0.254	
141008	1 - 60	141008/61	61 - >	8 m	1.8	25	80x85x40	2100	0.426	
141010	1 - 60	141010/61	61 - >	10 m	1.8	25	80x85x40	2100	0.525	
<b>graduation in mm/inch</b>										
141103	1 - 120	141103/121	121 - >	3 m / 10 ft	0.9	16	65x65x35	1400	0.148	
141105	1 - 120	141105/121	121 - >	5 m / 16 ft	1.3	19	65x73x35	1750	0.254	
141108	1 - 60	141108/61	61 - >	8 m / 27 ft	1.8	25	80x85x40	2100	0.426	
141110	1 - 60	141110/61	61 - >	10 m / 33 ft	1.8	25	80x85x40	2100	0.525	

## ★★★★★ BLUE-LINE® Pocket Measuring Tape, in stainless steel metal housing EC II

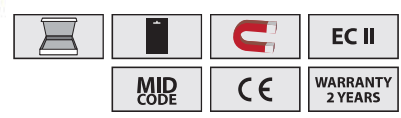
- exceptional tape stability
- suitable for craftsmen and industry
- with graduation on front- a. backside
- backside with crosswise graduation for comfortable vertical reading
- autom. blade-stop
- lies save and non slip in your hand
- rugged and rubber covered housing, with stainless metal clip and lanyard
- yellow coated blade, high rubb-off resistant and kink resistant
- self adjusting end-hook, with magnetic dots
- long-life spring made of special steel, automatic blade return and blade stop
- black/red figures, black scale
- from up to 25 mm blade with 3 rivets fixed



with robust hanging card



backside: vertical reading



ART N°	order quantity	ART N°	order quantity							
141403	1 - 120	141403/121	121 - >	3	0.9	19	80 x 75 x 35	1750	0.200	
141405	1 - 120	141405/121	121 - >	5	1.3	25	80 x 75 x 42	2100	0.310	
141408	1 - 60	141408/61	61 - >	8	1.8	25	80 x 75 x 42	2100	0.470	