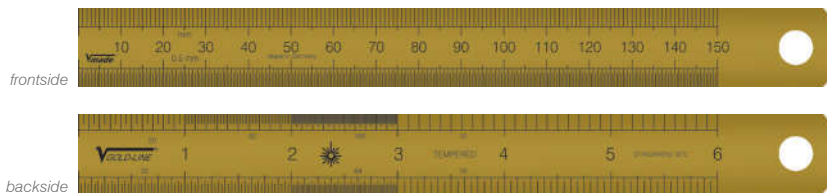


GOLD-LINE® Stainless Steel Rules, gold plated

metric graduation acc. to EC II and BS

- graduation on front- and rearside
- reading from left to right
- precise, deep laser engraved scale
- non-glare, matt surface, with clear reading
- sea water resistant, stainless steel
- with gold plated surface, ~24 Carat



frontside 1/1 mm and 1/2 mm
backside 1/10; 1/16; 1/20; 1/32; 1/64; 1/50; 1/100 inch

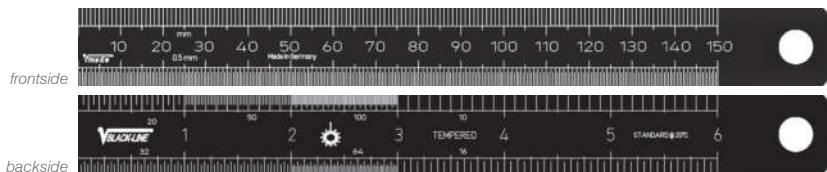


ART NO	mm / inch		KG	ART NO CC
1026432015	150 / 6	18 x 0.5	0.013	1094300
1026432030	300 / 12	30 x 1.0	0.070	1094301

BLACK-LINE® Steel Rules, black anodized

metric graduation acc. to EC II and BS

- graduation on front- and rearside
- reading from left to right
- precise, deep laser engraved scale
- non-glare, matt surface, with clear reading
- carbon spring steel, with black anodized surface



frontside 1/1 mm and 1/2 mm
backside 1/10; 1/16; 1/20; 1/32; 1/64; 1/50; 1/100 inch

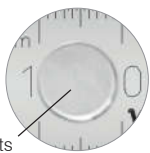


ART NO	mm / inch		KG	ART NO CC
1026431015	150 / 6	18 x 0.5	0.013	1094300
1026431030	300 / 12	30 x 1.0	0.070	1094301
1026431045	450 / 18	30 x 1.0	0.105	1094302
1026431060	600 / 24	30 x 1.0	0.140	1094303
1026431100	1000 / 40	30 x 1.0	0.245	1094304

RED-LINE® Stainless Steel Rules, with magnetic inserts

metric graduation acc. to EC II and BS

- graduation on front- and rearside
- reading from left to right
- with two straight ends without hole
- precise, deep laser engraved scale
- non-glare, matt surface, with clear reading
- with detachable magnetic inserts
- non-glare, matt surface



with magnetic inserts



frontside 1/2 mm und 1/1 mm



backside 1/32 und 1/64 inch



ART NO	mm / inch		KG	ART NO CC
1026433015	150 / 6	20 x 1.0	0.030	1094300
1026433030	300 / 12	30 x 1.0	0.070	1094301
1026433060	600 / 24	30 x 1.0	0.155	1094302
1026433090	900 / 36	30 x 1.0	0.210	1094303
1026433120	1200 / 48	30 x 1.0	0.280	1094304